

Christ the Lord Church Office Hours

Sandy: Monday - Friday, 9:30am - 12:30pm

Sunday Service 10AM

CTL eNews for Jan 16 -22, 2025

Please contact Sandy at ctl.welcome1@gmail.com for contributions to the eNews

January 2025 Sunday, Jan 19 - Worship 10 am with Rev. Vicki Gray delivering the sermon; 2 pm Bishop's Committee via Zoom
Sunday, Jan 26 - Worship 10 am

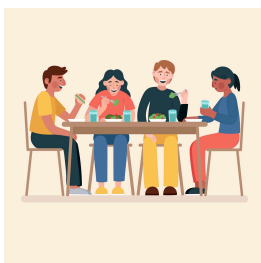
February Sunday, Feb 2 - Worship 10am; Annual General Meeting to follow.
Saturday, Feb 8 - Creativity Unlimited - 2 pm at Elaine Glimme's house.
Sunday, Feb 9 - Worship 10 am
Saturday, Feb 22 - Bishop's Committee Planning Day, 9:30-3:00.

March Sunday, March 2 - Worship 10 am
Wednesday, March 5 - Ash Wednesday
Saturday, March 8 - Liturgical training at CTL for those interested in serving during the worship service.

Aid for victims of Los Angeles wildfires - Donations can be made to any of these groups:

- [American Red Cross](#)
- [California Fire Foundation Wildfire & Disaster Relief Fund](#)
- [Los Angeles Regional Food Bank](#)
- [CORE \(Community Organized Relief Effort\) Los Angeles](#)

1st Sunday Special Donation - *In January, the 1st Sunday Special Donations will go to the [Episcopal Impact Fund](#).*



Newcomers' Welcome get-together - Rev. Lois will host a lunch for our newer CTL members on Saturday, March 29. This introductory social event will be a meal at a local restaurant (to be announced) and will provide an opportunity to learn more about our church and each other. Please let Sandy know if you are interested in attending by replying to ctl.welcome@gmail.com.



Fellowship & Hospitality - This is a lovely tradition to continue and enjoy! If you would like to bring a food item and assist with clean-up, please see the sign-up sheet in the Narthex and choose a day that works for you to share your CTL spirit! Thank you to Maria Roy, who has

volunteered to be our Fellowship Coordinator!

Creativity Unlimited takes place every 2nd Saturday of the month. All are welcome. Meetings are at the home of Elaine Glimme. Please contact her for more info at (510) 859-5317. Next Creativity Unlimited will be on February 8 at 2pm.

Donations and pledge payments to support CTL and our various ministries may be given at <https://christthelord.gvtls.com>, or by sending a check to the church. Remember you can always give to charities of your choice at any time.

The “Ark” Birthday/Special Intentions Bank donations go to “Doctors Without Borders”.

2024/25 Bishop’s Committee: Please contact a Committee member if you would like to have a specific item addressed at one of the monthly Committee meetings. All congregation members are welcome to attend the monthly meetings, which are held on Zoom at 2 pm on the 3rd Sunday of the month. Contact Sandy to get Zoom access information.

Elaine Glimme (Senior Warden) 510-859-5317
Joe Cleberg (Junior Warden) 510-640-7727
Joanne Addy 510-424-2570
Chris Cornish 415-314-8144
Elaine Glimme 510-859-5317
Cristina Rich 510-741-8076
Joakim Roy 510-948-8229
Christine Nadeau (Treasurer) 510-275-3341
Sandy McNeel (Clerk) 510-691-0310

Homebound Communion for CTL members:
We have a Eucharistic visitor who will bring the communion elements (bread/wine/juice) and/or also do a service in your home. Please contact Elaine Glimme (510) 859-5317 or ElaineGlimme@comcast.net

Prayer List O Lord, please remember the friends and family for whom we now pray. Comfort them and ease their suffering. Bless them with Your loving care, renew their strength, and provide comfort. We ask this in Your holy name. Amen.

Continued healing prayers are requested for Margaret Young, Ted Rich, Kathy Cleberg, Jeanne Walpole, Chris Johnson, Sally Cash, Alastair Brown and Linda Morgan.

Prayers of comfort and strength for Rev. Kate Salinaro following the death of her son, Kenneth Hancock.

////////////////////////////////////

Interfaith Council of Contra Costa County

For more details and information about Interfaith Council events, please contact Christine Nadeau christinenadeau50@yahoo.com or 510-275-3341